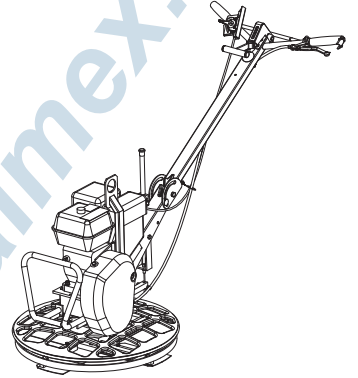


Spare parts list

Trowel

	Valid from serial number
G610 B (TP)	BGB52000001
G610 B (TP)	BGF0000001
G610 B (QP)	BGB52000001
G610 B (QP)	BGF0000001





DALMEX

TREMIX®

www.dalmex.net

www.dalmex.net

www.dalmex.net

www.dalmex.net

Contents

General information.....	5
Spare parts list.....	6
Handle, quick pitch.....	6
Handle, twist pitch.....	8
Engine installation, Honda GX 120.....	12
Support and gearbox.....	14
Power transmission, Honda GX 120.....	16
Protective ring.....	18
Blade assembly.....	20
Labels, quick pitch.....	22
Labels, twist pitch.....	24
Accessories.....	26
Consumables.....	26
Transport device.....	28
Kits.....	30
Service kit, Honda GX 120.....	30
Maintenance kit (yearly recommend).....	30



DALMEX

TREMIX®

www.dalmex.net

www.dalmex.net

www.dalmex.net

www.dalmex.net

General information

This spare parts list applies to the following:

Part number	Description
3382 0001 28	Trowel G610 (QP)
3382 0001 30	Trowel G610 (TP)

Use only authorized parts. Any damage or malfunction caused by the use of unauthorized parts is not covered by Warranty or Product Liability.

Any unauthorized use or copying of the contents or any part thereof is prohibited. This applies in particular to trademarks, model denominations, part numbers, and drawings.

Instructions for use

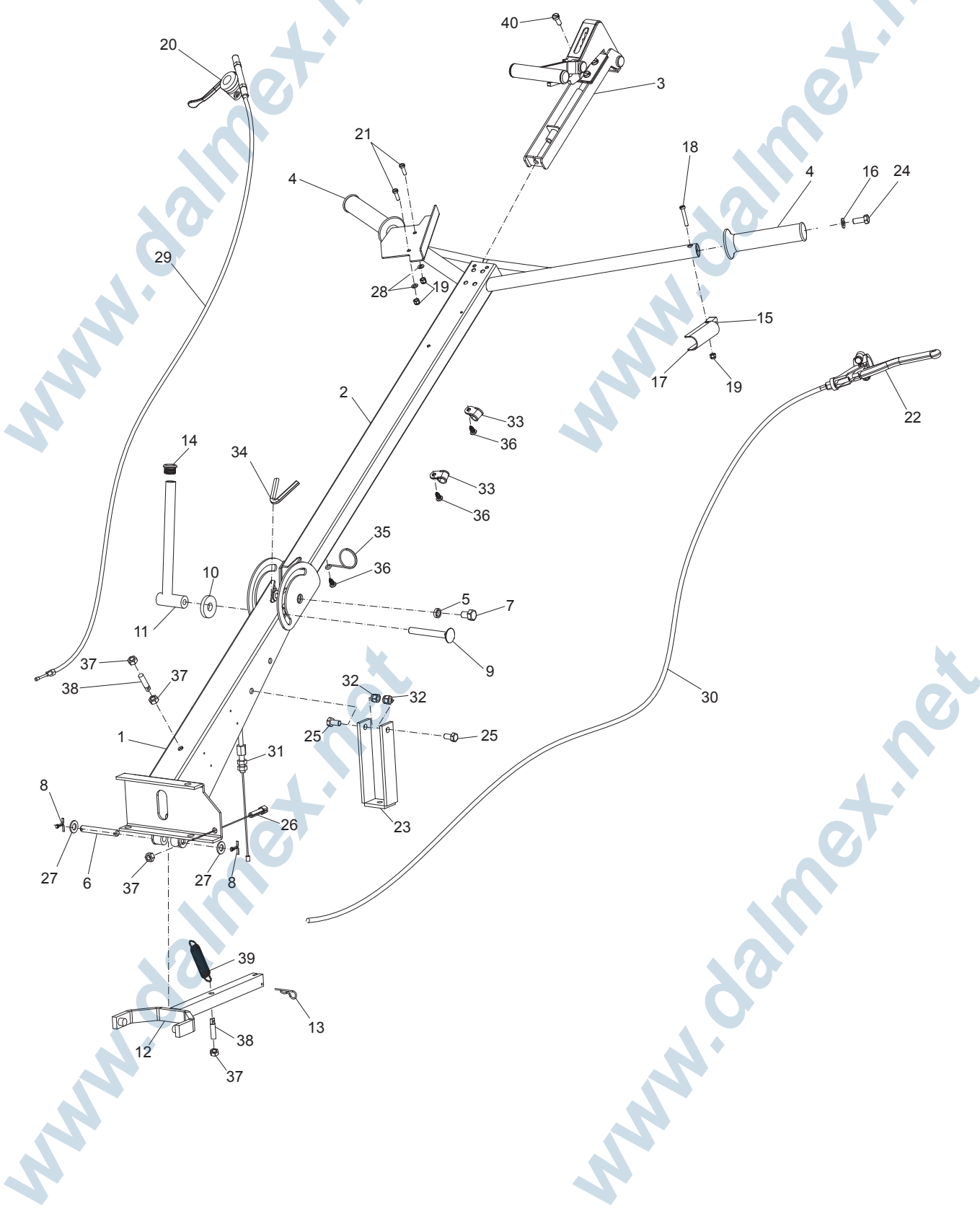
This spare parts list contains no safety regulations and is merely intended to assist in the ordering of spare parts.

For information about operating, servicing, or repairing, the relevant Safety and operating instructions must be consulted at all costs.

Please observe the safety instructions listed in the relevant Safety and operating instructions!

Spare parts list

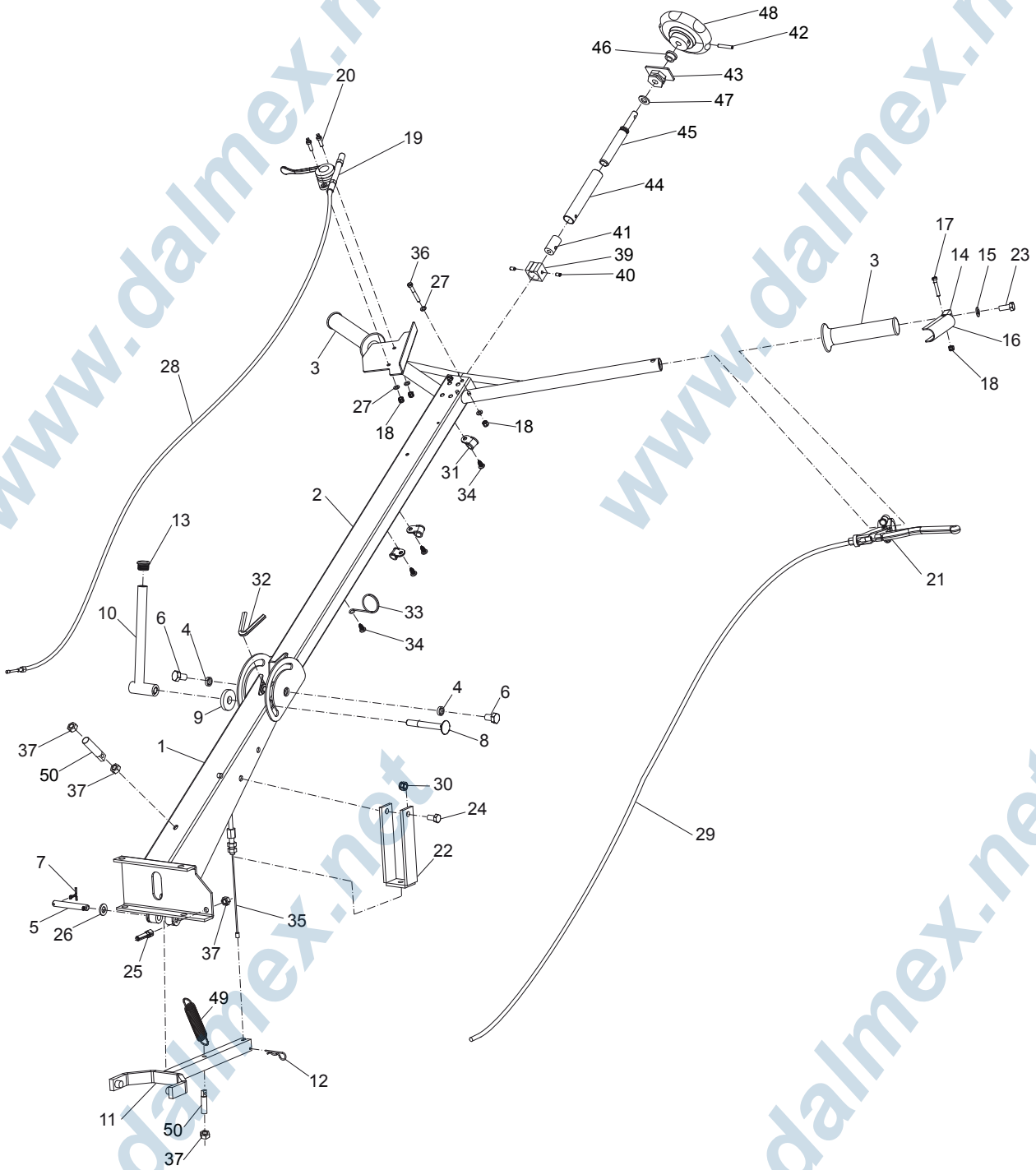
Handle, quick pitch



No.	Description	Remark	Quantity	Part number
1	Handle bracket		1	3382 0109 35
2	Handle upper part		1	3382 0109 34
3	Quick pitch		1	4700 0330 85
4	Rubber handle		2	4700 0012 13
5	Spacer sleeve		2	4700 0490 52
6	Shaft		1	4700 0478 60
7	Screw	M10 x 16 mm	2	-
8	Split pin	3.2 x 28 mm 0.13 x 1.10 in.	2	0111 1279 03
9	Square neck bolt		1	0226 9915 25
10	Washer	13 x 36 x 6 mm 0.51 x 1.42 x 0.24 in.	1	-
11	Locking lever		1	4700 0490 51
12	Fork		1	4700 0330 63
13	Locking clip		1	0111 1686 06
14	Tube plug		1	4700 0028 16
15	Handle holder		1	4700 3647 58
16	Washer	8.4 x 16 x 1.6 mm 0.33 x 0.63 x 0.06 in.	1	-
17	Handle		1	4700 3647 59
18	Screw	M5 x 30 mm	1	-
19	Lock nut	M5	3	0291 1128 14
20	Trottle control		1	4700 0017 39
21	Screw	M5 x 16 mm	2	-
22	Clutch handle		1	4700 0022 27
23	Bow		1	4700 0489 86
24	Screw	M10 x 16 mm	1	-
25	Screw	M10 x 30 mm	2	-
26	Set screw		1	4700 0022 28
27	Washer	10.5 x 20 x 2 mm 0.41 x 0.79 x 0.08 in.	2	-
28	Washer	5.3 x 10 x 1 mm 0.21 x 0.40 x 0.04 in.	2	-
29	Throttle wire		1	4700 0489 79
30	Clutch wire		1	4700 0489 78
31	Adjusting wire		1	4700 0490 00
32	Lock nut	M8	2	-
33	Pipe clamp		2	0346 1000 49
34	Edge protection		1	4700 0026 27
35	Wire holder		1	4700 0464 31
36	Tapping screw		3	0226 3139 03
37	Nut	M8	4	-
38	Bracket		2	4700 0001 68
39	Spring		1	3382 0112 39
40	Screw	M6 x 14 mm	4	-

Handle, twist pitch

38									
39	40	41	42	43	44	45	46	47	48



No.	Description	Remark	Quantity	Part number
1	Handle bracket		1	3382 0109 35
2	Handle upper part		1	3382 0109 34
3	Rubber handle		2	4700 0012 13
4	Spacer sleeve		2	4700 0490 52
5	Shaft		1	4700 0478 60
6	Screw	M10 x 16 mm	2	-
7	Split pin	3.2 x 28 mm 0.13 x 1.1 in.	2	0111 1279 03
8	Square neck bolt		1	0226 9915 25
9	Washer	13 x 36 x 6 mm 0.51 x 1.42 x 0.24 in.	1	-
10	Locking lever		1	4700 0490 51
11	Fork		1	4700 0330 63
12	Locking clip		1	0111 1686 06
13	Tube plug		1	4700 0028 16
14	Handle holder		1	4700 3647 58
15	Washer	8.4 x 16 x 1.6 mm 0.33 x 0.63 x 0.06 in.	1	-
16	Handle		1	4700 3647 59
17	Screw	M5 x 30 mm	1	-
18	Lock nut	M5	5	-
19	Throttle control		1	4700 0017 39
20	Screw	M5 x 16 mm	2	-
21	Clutch handle		1	4700 0022 27
22	Bow		1	4700 0489 86
23	Screw	M8 x 20 mm 8.8	1	-
24	Screw	M8 x 16 mm 8.8	2	-
25	Set screw		1	4700 0022 28
26	Washer	10.5 x 20 x 2 mm 0.41 x 0.79 x 0.04 in.	2	-
27	Washer	5.3 x 10 x 1 mm 0.21 x 0.40 x 0.04 in.	6	-
28	Throttle wire		1	4700 0489 79
29	Clutch wire		1	4700 0489 78
30	Lock nut	M8	2	-
31	Pipe clamp		3	0346 1000 49
32	Edge protection		1	4700 0026 27
33	Wire holder		1	4700 0464 31
34	Tapping screw		4	0226 3139 03
35	Adjustment wire		1	4700 0490 00
36	Screw	M5 x 40 mm	2	-
37	Nut	M8	4	-
38(39-48)	Blade adjuster, complete		1	3382 1000 61
39	Guiding		1	-
40	Stop screw	M5 x 12 mm	2	-
41	Wire lock		1	-
42	Spring pin	5 x 30 mm 0.20 x 1.18 in.	1	-
43	Bearing support		1	-
44	Adjusting nut		1	-
45	Adjusting screw		1	-
46	Flange bearing		1	-
47	Washer		1	-
48	Knob		1	-
49	Spring		1	3382 0112 39

No.	Description	Remark	Quantity	Part number
50	Bracket		2	4700 0001 68

www.dalmex.net

www.dalmex.net

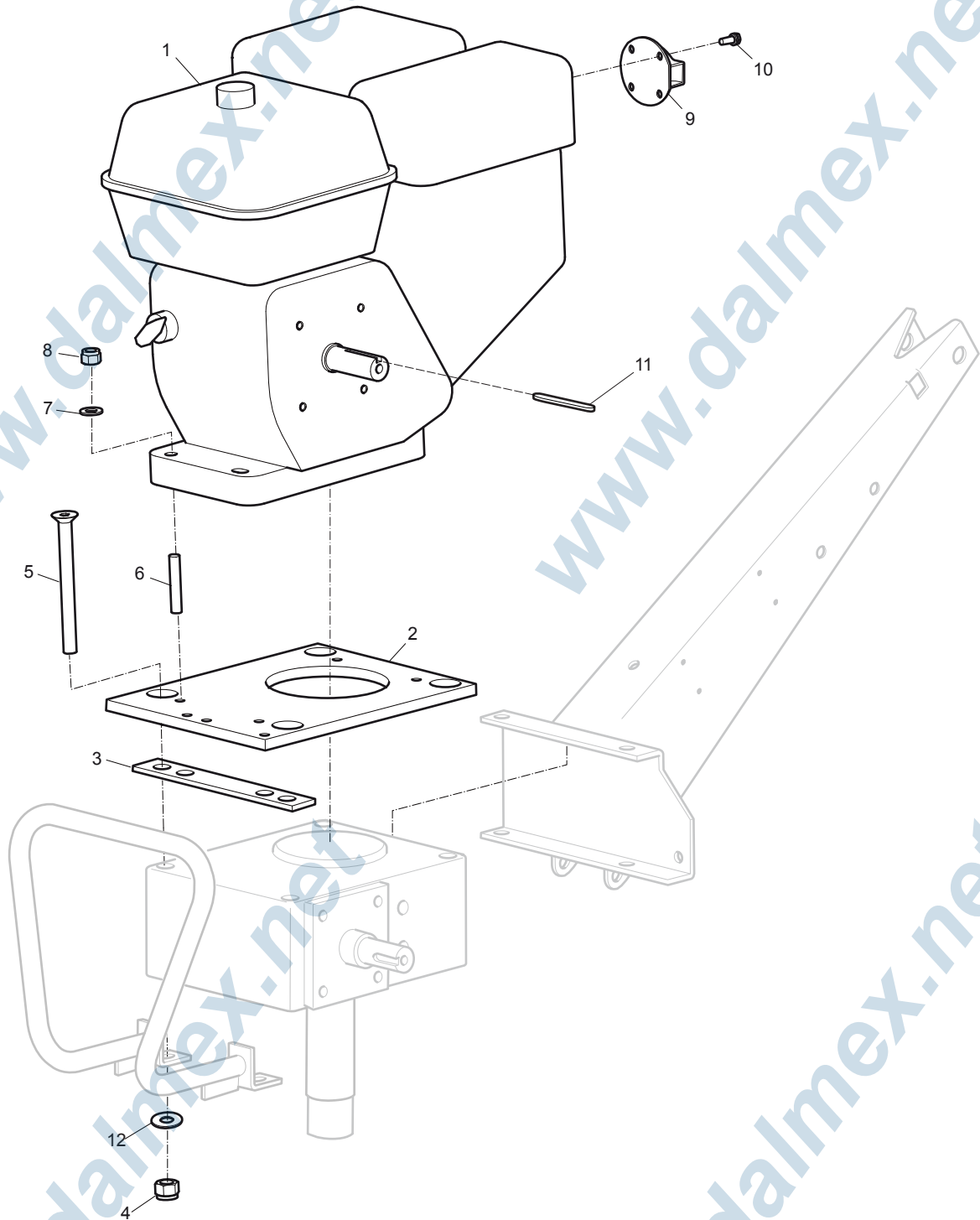
www.dalmex.net

www.dalmex.net

www.dalmex.net

www.dalmex.net

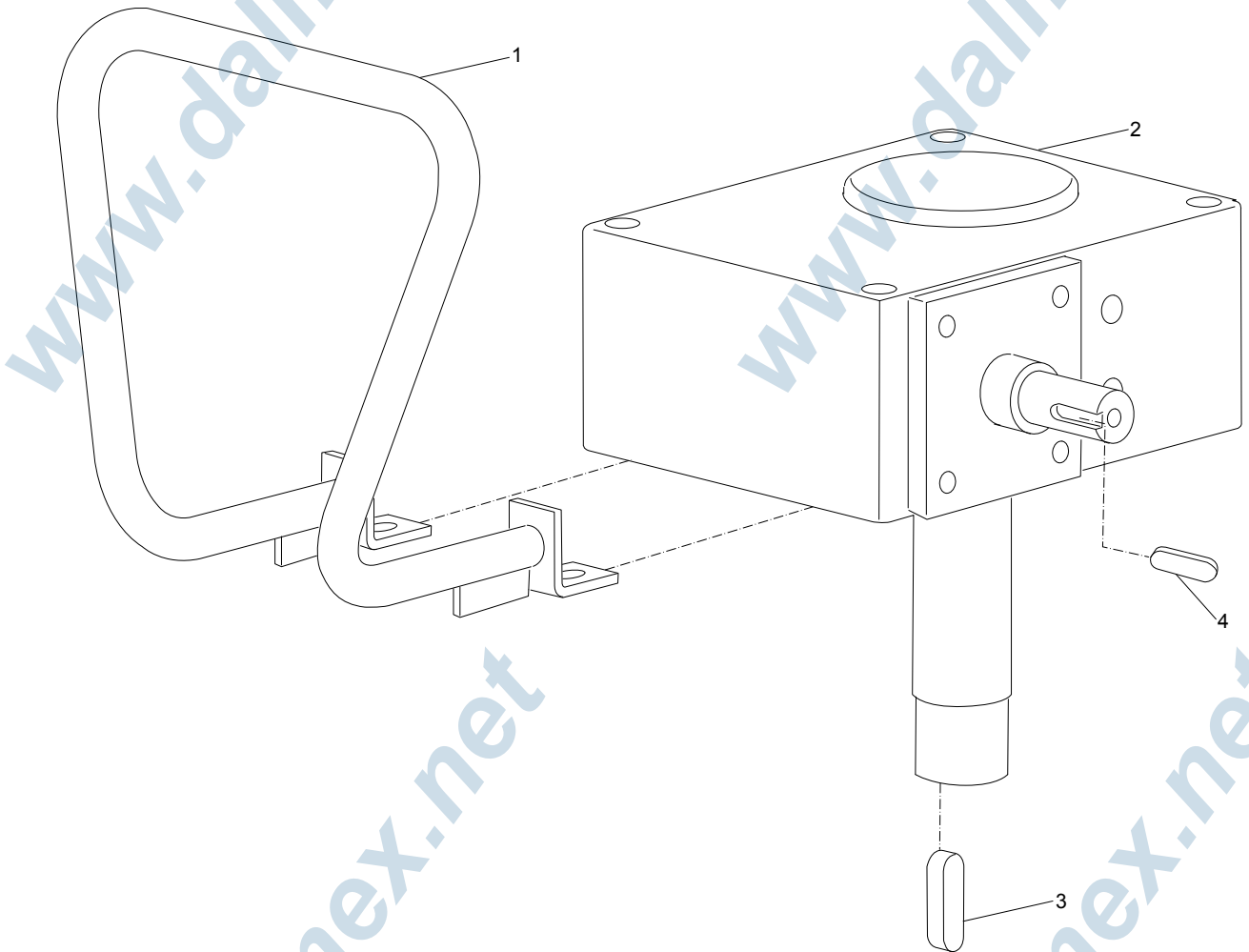
Engine installation, Honda GX 120



No.	Description	Remark	Quantity	Part number
1	Engine	Honda GX 120	1	4700 2821 90
2	Engine plate		1	3382 0109 32
3	Spacer plate		1	3382 0105 57
4	Lock nut	M10	4	-
5	Screw	M10 x 105 mm	4	4700 1865 73
6	Stud	M8 x 40 mm Use LOCTITE®243™	4	0248 9980 09
7	Washer	8.4 x 16 x 1.6 mm 0.33 x 0.63 x 0.06 in.	4	-
8	Lock nut	M8	4	-
9	Deflector		1	4700 2390 62
10	Tapping screw	4 x 8 mm 0.16 x 0.31 in.	4	-
11	Flat key		1	4700 2393 42
12	Washer	10.5 x 20 x 2 mm 0.41 x 0.79 x 0.08 in.	4	-

LOCTITE is a registered trademark of Henkel Corporation. 243 is a trademark of Henkel Corporation.

Support and gearbox

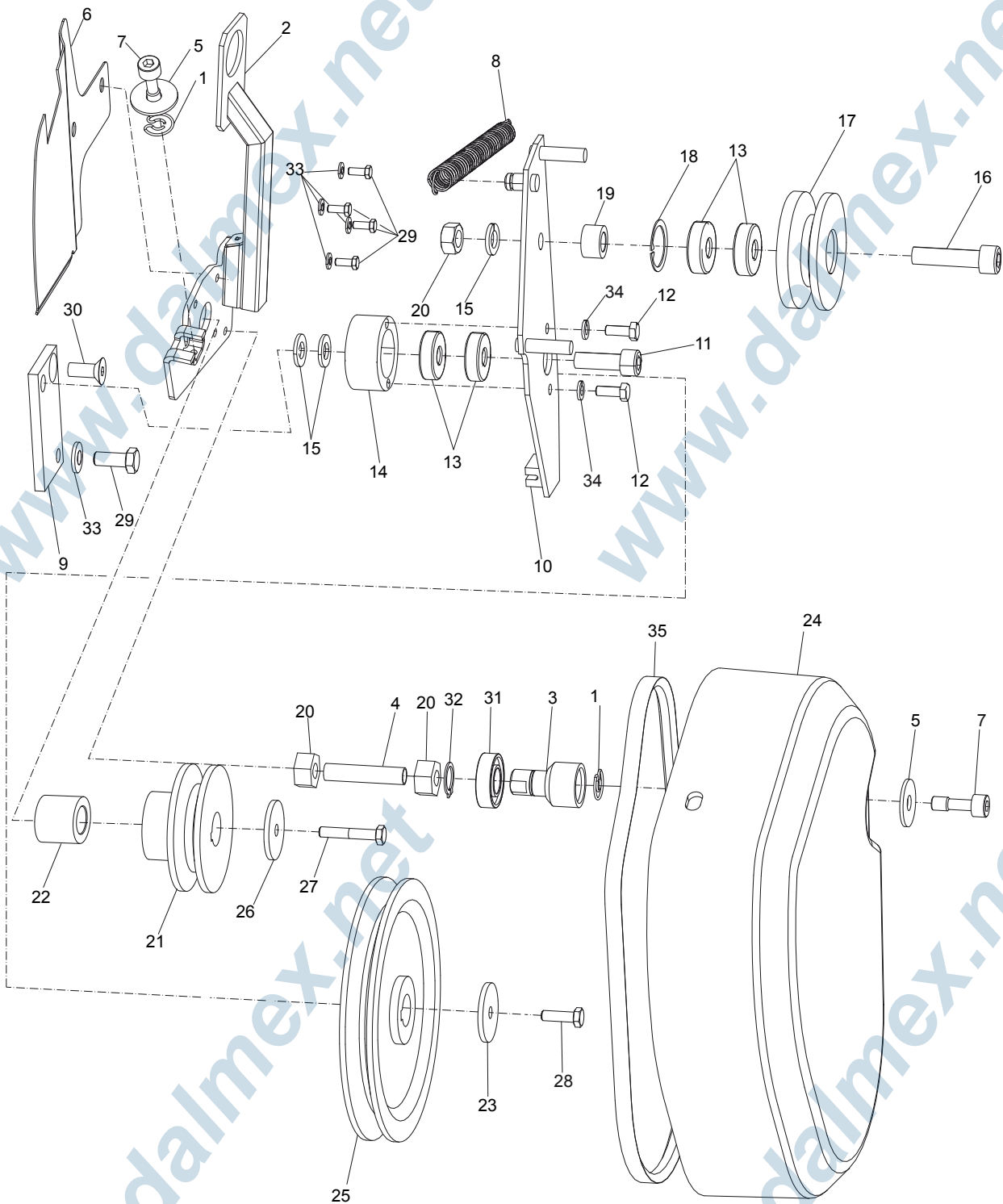


No.	Description	Remark	Quantity	Part number
1	Support arch		1	3382 0104 62
2	Gear box		1	4700 0028 58
3	Flat key	10 x 8 x 45 mm 0.40 x 0.31 x 1.77 in.	1	0337 7160 00
4	Flat key	6 x 6 x 25 mm 0.24 x 0.24 x 0.98 in.	1	0337 2120 00

www.dalmex.net

www.dalmex.net

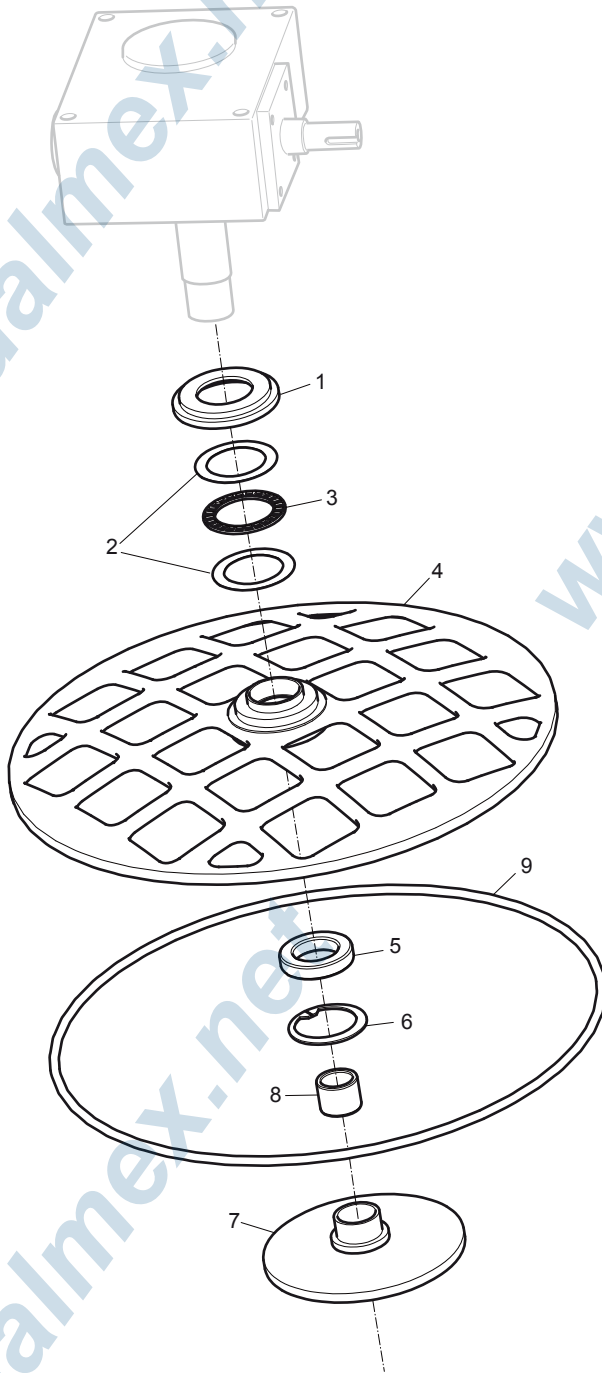
Power transmission, Honda GX 120



No.	Description	Remark	Quantity	Part number
1	Lock spring		1	4812 0704 31
2	Lifting hook		1	3382 0109 40
3	Holder		1	4812 0602 74
4	Rod	M10 x 48 mm 8.8	1	4812 0603 02
5	Washer	8 x 30 mm 0.31 x 1.18 in.	2	-
6	Safety plate		1	3382 0108 34
7	Captive screw		2	4812 0602 78
8	Pull spring		1	4700 0478 71
9	Bracket		1	4700 0477 86
10	Belt tensioner		1	4700 0477 87
11	Cap screw	M10 x 30 mm 8.8	1	-
12	Screw	M6 x 20 mm 8.8	2	-
13	Ball bearing		4	4150 1905 00
14	Bearing housing		1	4700 0477 89
15	Washer	10 x 2 mm 0.39 x 0.08 in.	3	-
16	Cap screw	M10 x 40 mm 8.8	1	-
17	Pulley		1	4700 0477 90
18	Retaining ring		1	0335 2132 00
19	Spacer		1	4700 0480 25
20	Washer	10 x 2 mm 0.39 x 0.08 in.	3	-
21	Pulley		1	4812 0601 94
22	Spacer		1	4700 0478 67
23	Washer	6.5 x 30 x 4 mm 0.26 x 1.18 x 0.16 in. 300 HV	1	-
24	Belt cover		1	3382 0109 41
25	Belt wheel		1	4700 0326 29
26	Washer	6.5 x 30 x 4 mm 0.26 x 1.18 x 0.16 in. 300 HV	1	-
27	Screw	M8 x 35 mm 8.8 Use LOCTITE® 243™	1	-
28	Screw	M6 x 20 mm 8.8 Use LOCTITE® 243™	1	-
29	Screw	M8 x 20 mm 8.8	5	-
30	Countersunk screw	M8 x 30 mm	1	-
31	Ball bearing		1	0502 1090 02
32	Retaining ring		1	0335 1117 00
33	Washer	10 x 2 mm 0.39 x 0.08 in.	5	-
34	Washer	6 x 1.6 mm 0.24 x 0.06 in.	2	-
35	Belt	M=s XPA 732 mm	1	4700 0028 08

LOCTITE is a registered trademark of Henkel Corporation. 243 is a trademark of Henkel Corporation.

Protective ring

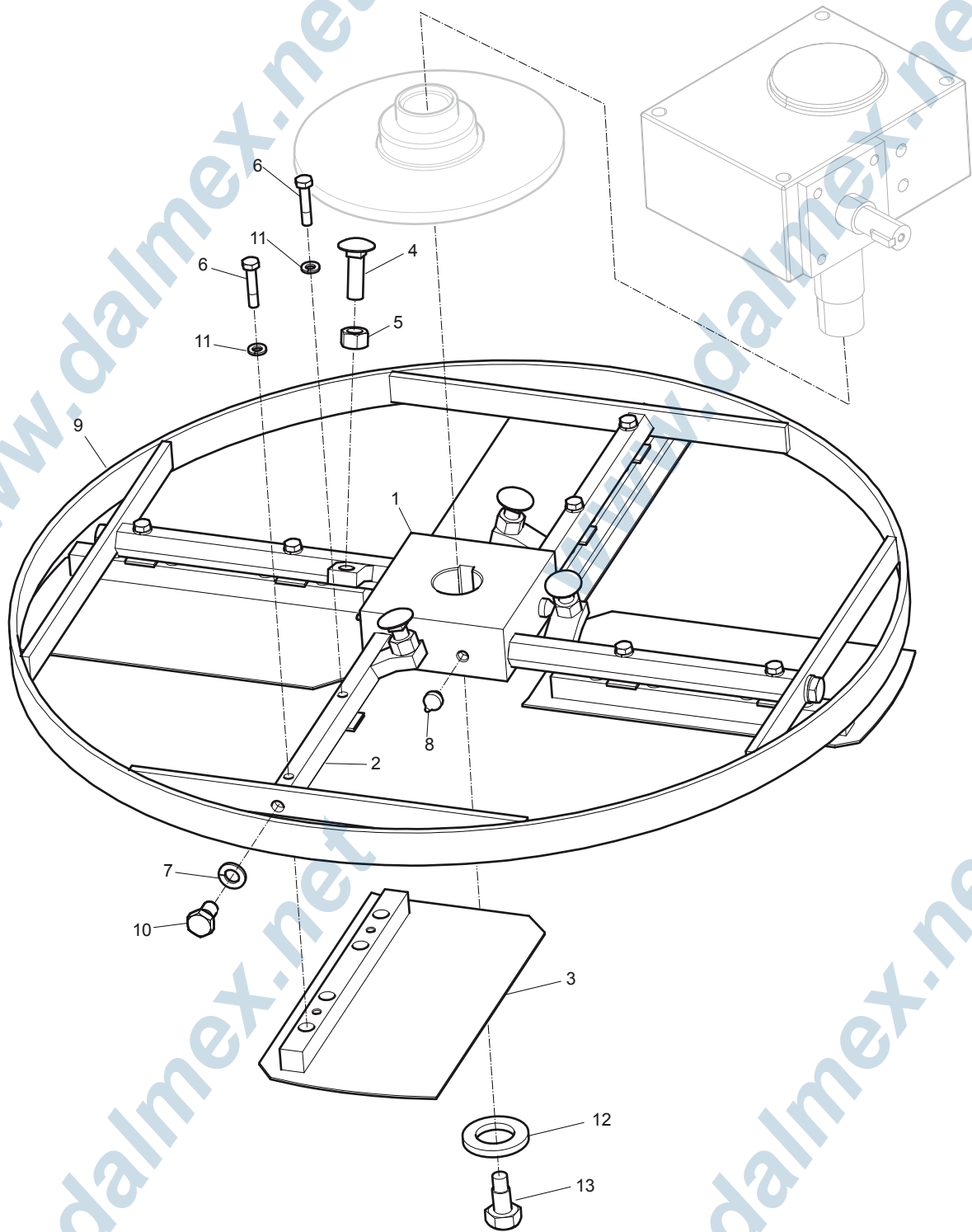


No.	Description	Remark	Quantity	Part number
1	Pressing sleeve	116 x 15 mm 4.57 x 0.60 in.	1	4700 0489 26
2	Thrust washer	AS 6590	2	4700 0001 66
3	Thrust bearing	AXK 6590	1	4700 0001 65
4	Protective cover		1	3382 0109 31
5	Ball bearing	6010 - 2RS1	1	4700 0001 15
6	Retaining ring	80 x 2.5 mm 3.15 x 0.10 in.	1	0335 2160 00
7	Pressure plate		1	4700 0330 90
8	Sleeve bearing		1	4700 0022 25
9	PVC ring	ø10 mm ø0.40 in.	1	4700 0490 57

www.dalmex.net

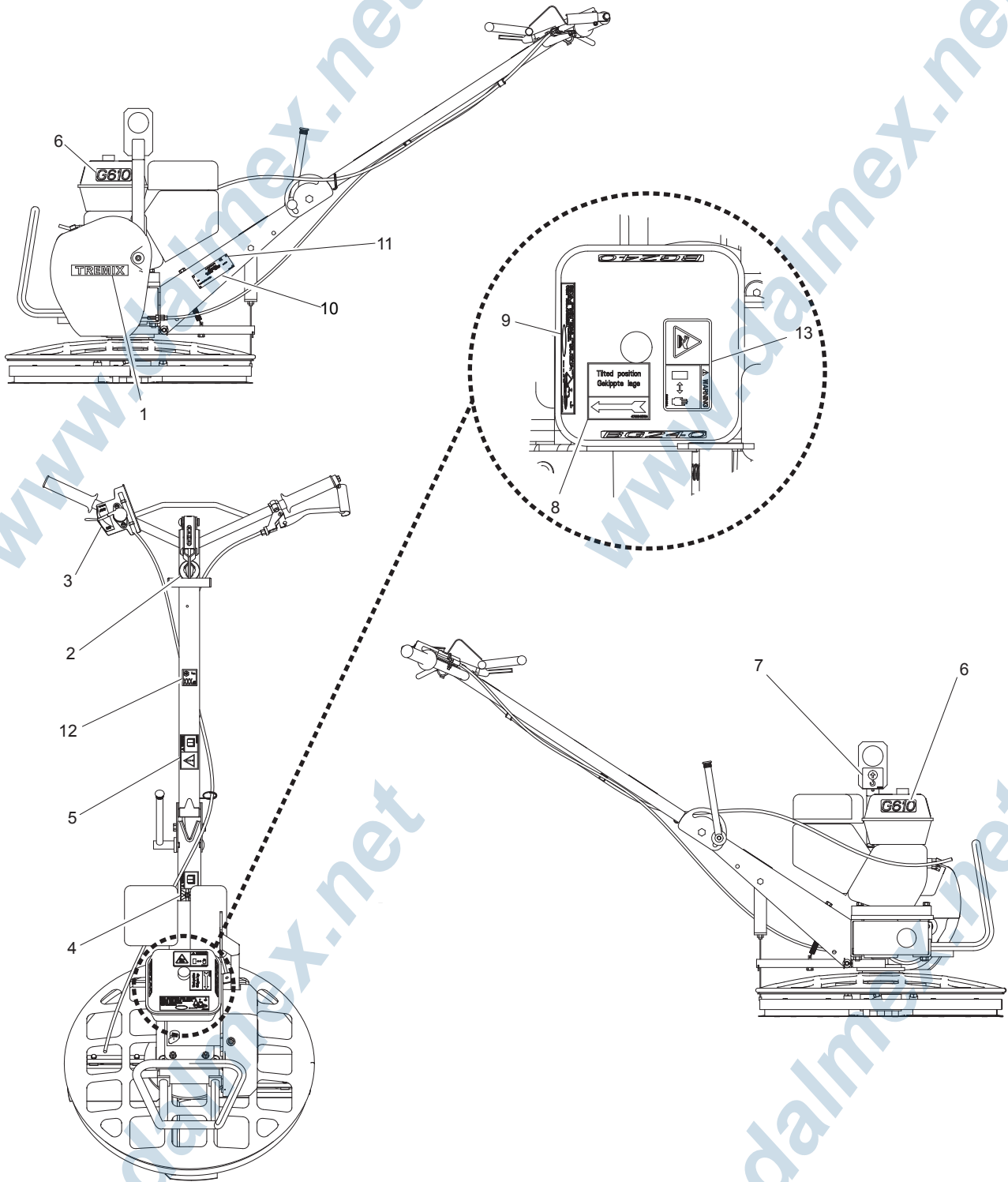
www.dalmex.net

Blade assembly



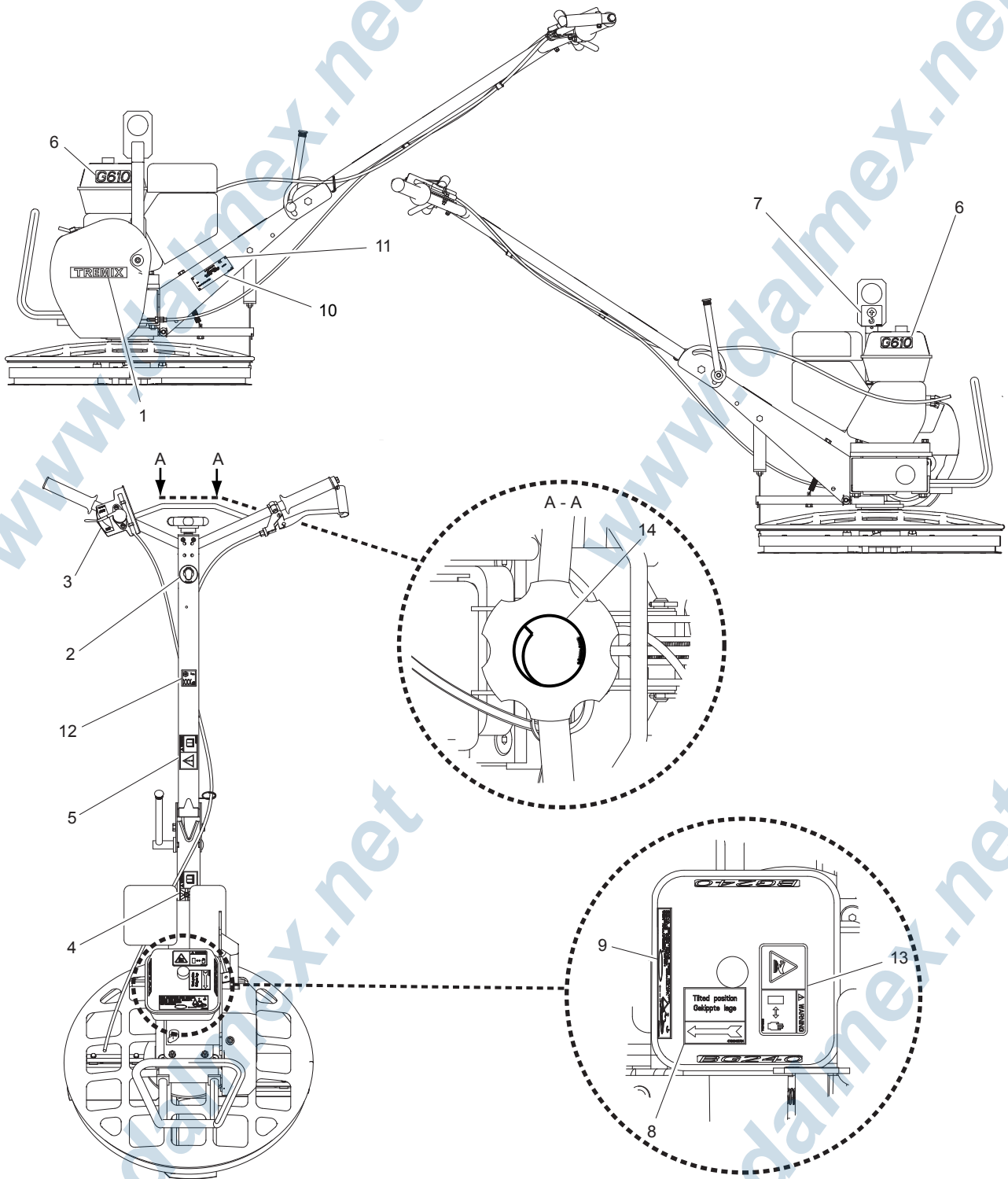
No.	Description	Remark	Quantity	Part number
1	Hub		1	4700 0330 26
2	Blade axle		4	4700 0330 27
3	Trowel blade		4	4700 0489 68
4	Square neck bolt	10 x 35 mm 0.40 x 1.38 in.	4	-
5	Nut	M10	4	-
6	Screw	M6 x 30 mm 8.8	8	-
7	Washer	10 x 16 mm 0.40 x 0.63 in.	4	-
8	Grease nipple		4	0544 1100 09
9	Blade ring		1	4700 0330 30
10	Screw	M10 x 16 mm	4	-
11	Washer	6 x 1.6 mm 0.24 x 0.06 in.	8	-
12	Washer	13 x 3 mm 0.51 x 0.12 in.	1	-
13	Screw	M12 x 30 mm	1	-

Labels, quick pitch



No.	Description	Remark	Quantity	Part number
1	Product label	"Tremix"	1	3382 0110 04
2	Label	Ear protection	1	3382 0109 00
3	Label	Stop - Run	1	4700 0467 58
4	Label	Cutting hazards	1	3382 0112 41
5	Safety label		1	3382 0108 99
6	Product label	G610	2	3382 0112 34
7	Label	Lift point	1	3382 0109 01
8	Label	Tilted position	1	4700 0467 64
9	Label	Remove disc	1	4700 0462 39
10	Data plate		1	4811 0000 03
11	Drive screw		4	-
12	Label	Sound power level	1	4700 7912 86
13	Label	Warning for heat	1	4700 9034 24

Labels, twist pitch



No.	Description	Remark	Quantity	Part number
1	Product label	"Tremix"	1	3382 0110 04
2	Label	Ear protection	1	3382 0109 00
3	Label	Stop - Run	1	4700 0467 58
4	Label	Cutting hazards	1	3382 0112 41
5	Safety label		1	3382 0108 99
6	Product label	G610	2	3382 0112 34
7	Label	Lift point	1	3382 0109 01
8	Label	Tilted position	1	4700 0467 64
9	Label	Remove disc	1	4700 0462 39
10	Data plate		1	-
11	Drive screw		4	-
12	Label	Sound power level	1	4700 7912 86
13	Label	Warning for heat	1	4700 9034 24
14	Label	Blade angle	1	4700 0459 02

Accessories

Consumables

Description	Remark	Quantity	Part number
Floating disc		1	4700 0330 81
Trowel blade	Bolt on (4 blades included)	1	4700 0489 68

www.dalmex.net

www.dalmex.net

www.dalmex.net

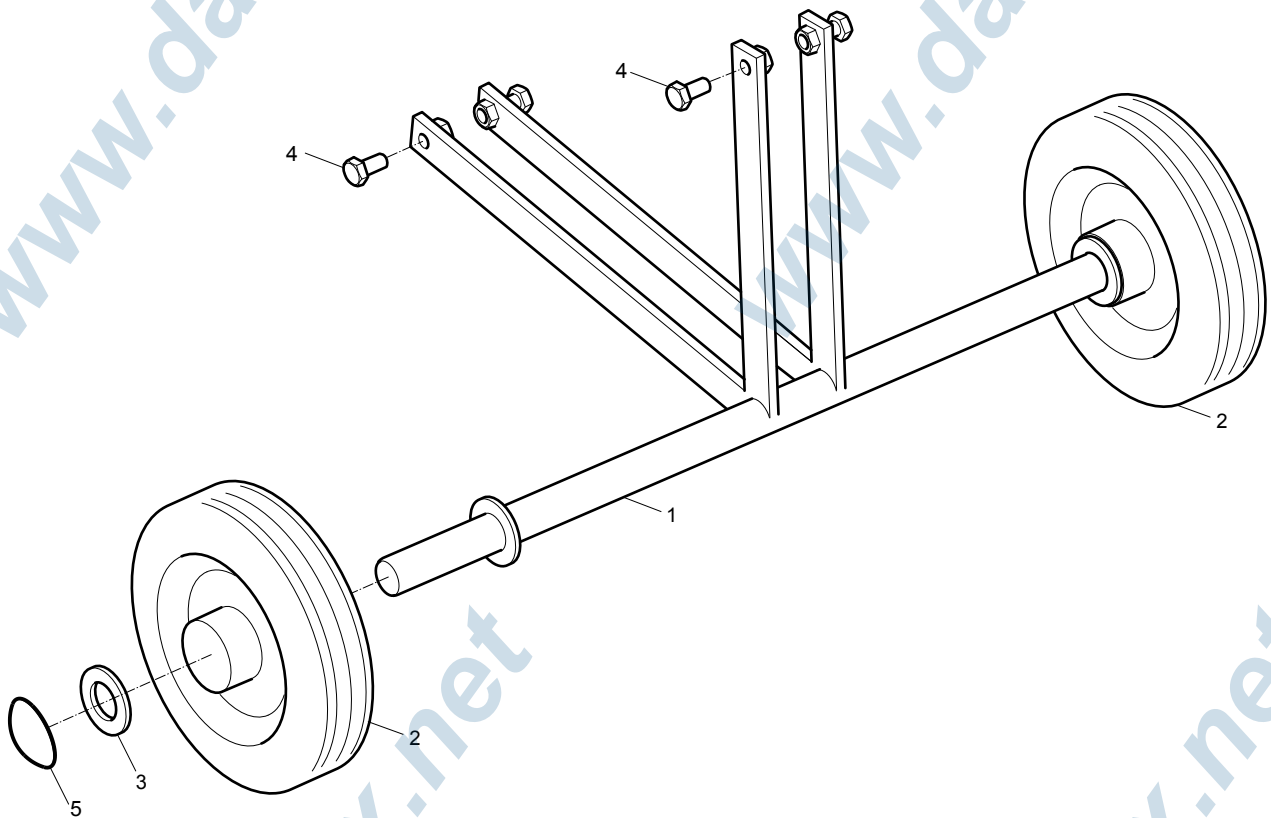
www.dalmex.net

www.dalmex.net

www.dalmex.net

Transport device

Part number 3382 0105 72



No.	Description	Remark	Quantity	Part number
1	Wheel frame		1	4700 0331 39
2	Wheel		2	4700 0017 55
3	Washer	21 x 37 x 3 mm 0.83 x 1.46 x 0.12 in.	2	-
4	Screw	M8 x 16 mm 8.8	4	-
5	Locking washer		2	3382 0112 02

www.dalmex.net

www.dalmex.net

Kits

Service kit, Honda GX 120

One year service kit

Part number 3382 1001 05

Description	Remark	Quantity	Part number
Air filter		1	4700 2390 64
Gasket	For oil dipstick	1	4700 9384 76
Starting rope		1	4700 2393 74
Spark plug		1	4700 9248 42
Gasket	For valve cover	1	4700 2383 01

Maintenance kit (yearly recommend)

Description	Remark	Quantity	Part number
Maintenance kit		1	3382 1000 17
V-belt	M=s XPA 732 mm	1	4700 0028 08
Throttle wire		1	4700 0489 79
Clutch wire		1	4700 0489 78
Blade adjusting wire		1	4700 0490 00



DALMEX

TREMIX®

www.dalmex.net

www.dalmex.net

www.dalmex.net

www.dalmex.net



DALMEX

TREMIX®

www.dalmex.net

www.dalmex.net

www.dalmex.net

www.dalmex.net

Any unauthorized use or copying of the contents or any part thereof is prohibited.
This applies in particular to trademarks, model denominations, part numbers, and drawings.

No. 9800 1341 01 | 2012-05-31

TREMIX®

www.dalmex.net